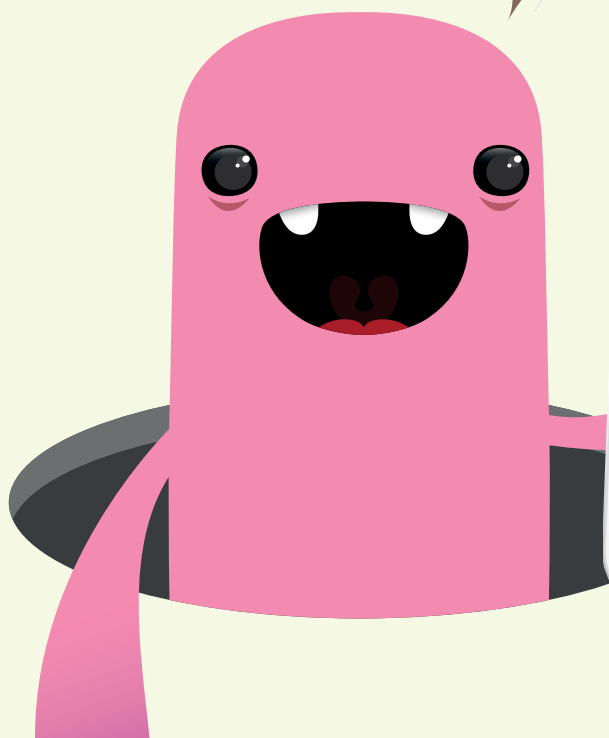


ARE YOU A TYPE II/III SMA PATIENT OR A CAREGIVER?

Help us create App games to measure SMA patients' motor abilities and strength



Roche is designing an App with games to measure SMA patients' motor abilities and strength.

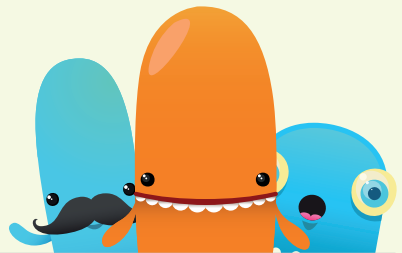
The App may help scientists better understand how patients are doing, which can be useful for future research into SMA therapy and treatment.

Are you a Type II/III SMA patient who is:

- Able to use a smartphone
- Between 6 and 25 years old

Or are you a caregiver for such a patient? Help us create a useful and fun App. Join a 1 hour session to try out the App and provide feedback.

To find out if you are eligible, please contact:



Donald Sawyer

Phone: 310-621-6803

Email: LighthouseResearch@hotmail.com

New York City dates: 5-7 May

Los Angeles dates: 14-16 May

